

eduroam for Windows 7

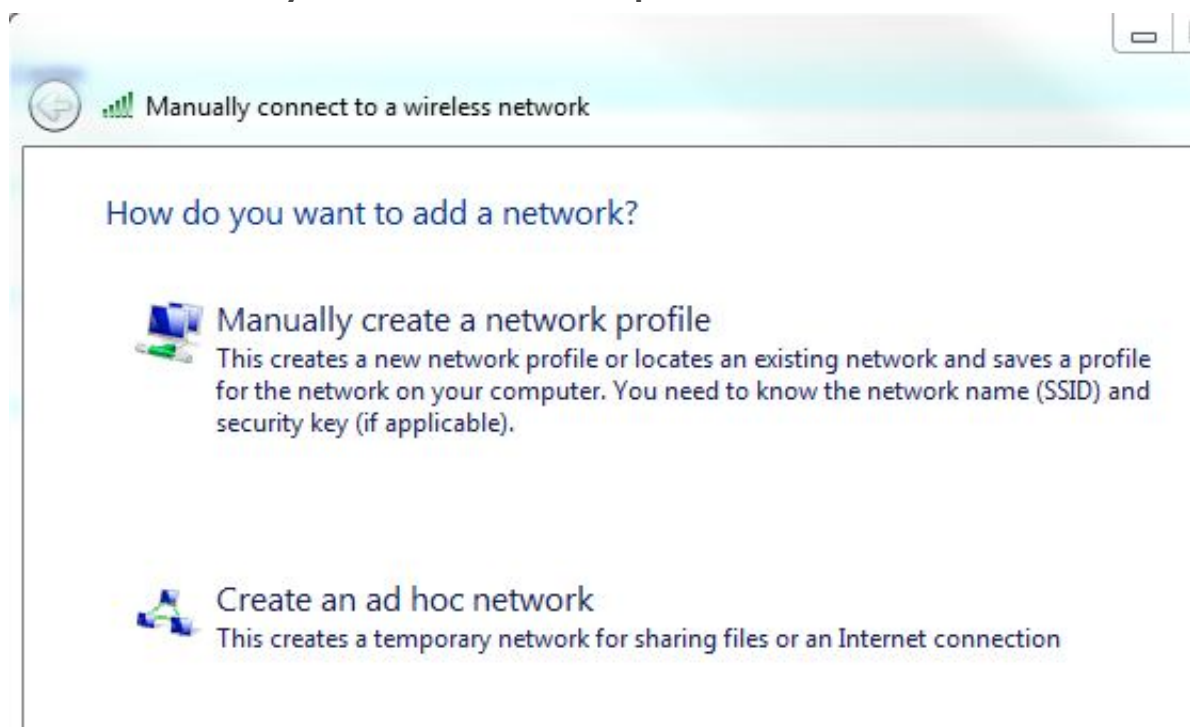
eduroam settings for Windows 7.

Pre-requisites

- Must be a participating institution in the eduroam initiative project.
- Turn on wireless card device

1) Go to **Control Panel>Network and Sharing Center> Manage Wireless network** and click **Add** button

2) Click **Manually create a network profile**



3) Supply the information as below and then click **Next** button:-

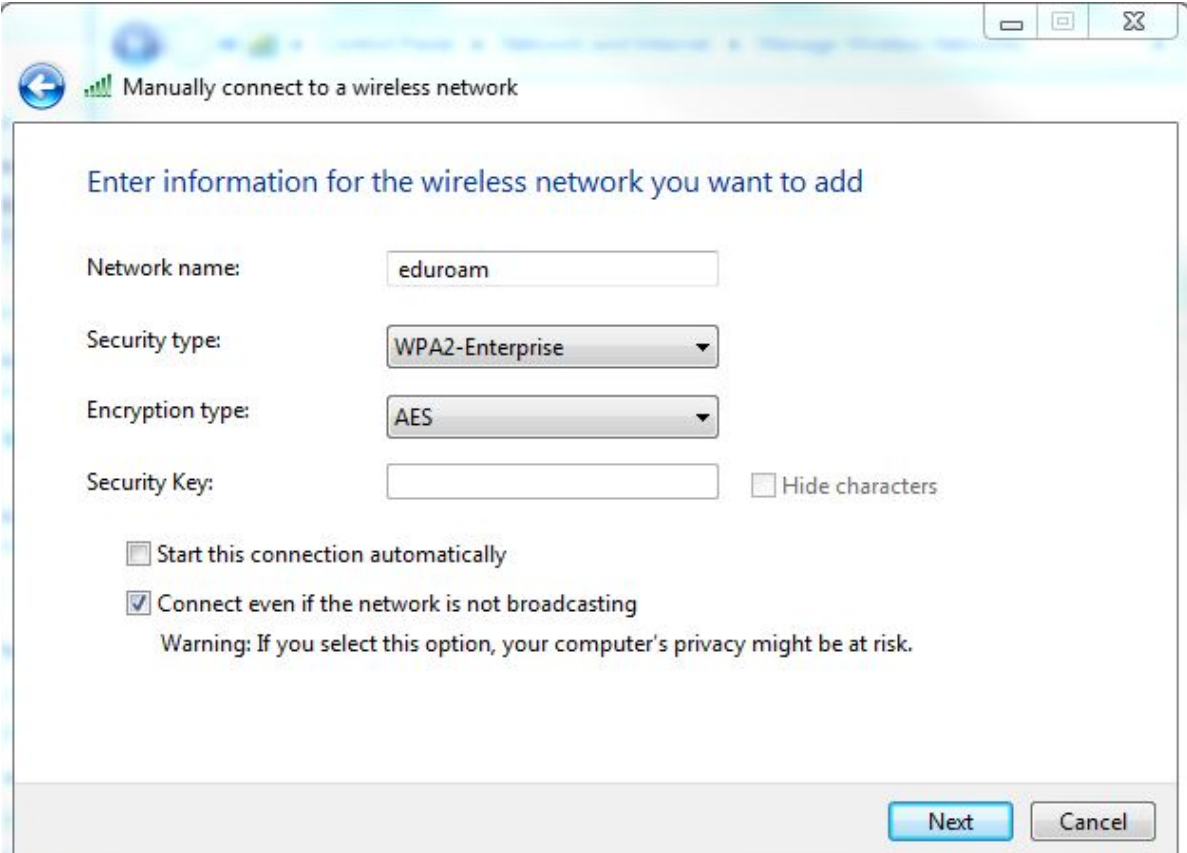
Network name: **eduroam** (case-sensitive)

Security type: **WPA2-Enterprise**

Encryption type: **AES**

Start this connection automatically: **unchecked**

Connect even if the network is not broadcasting : **Check**



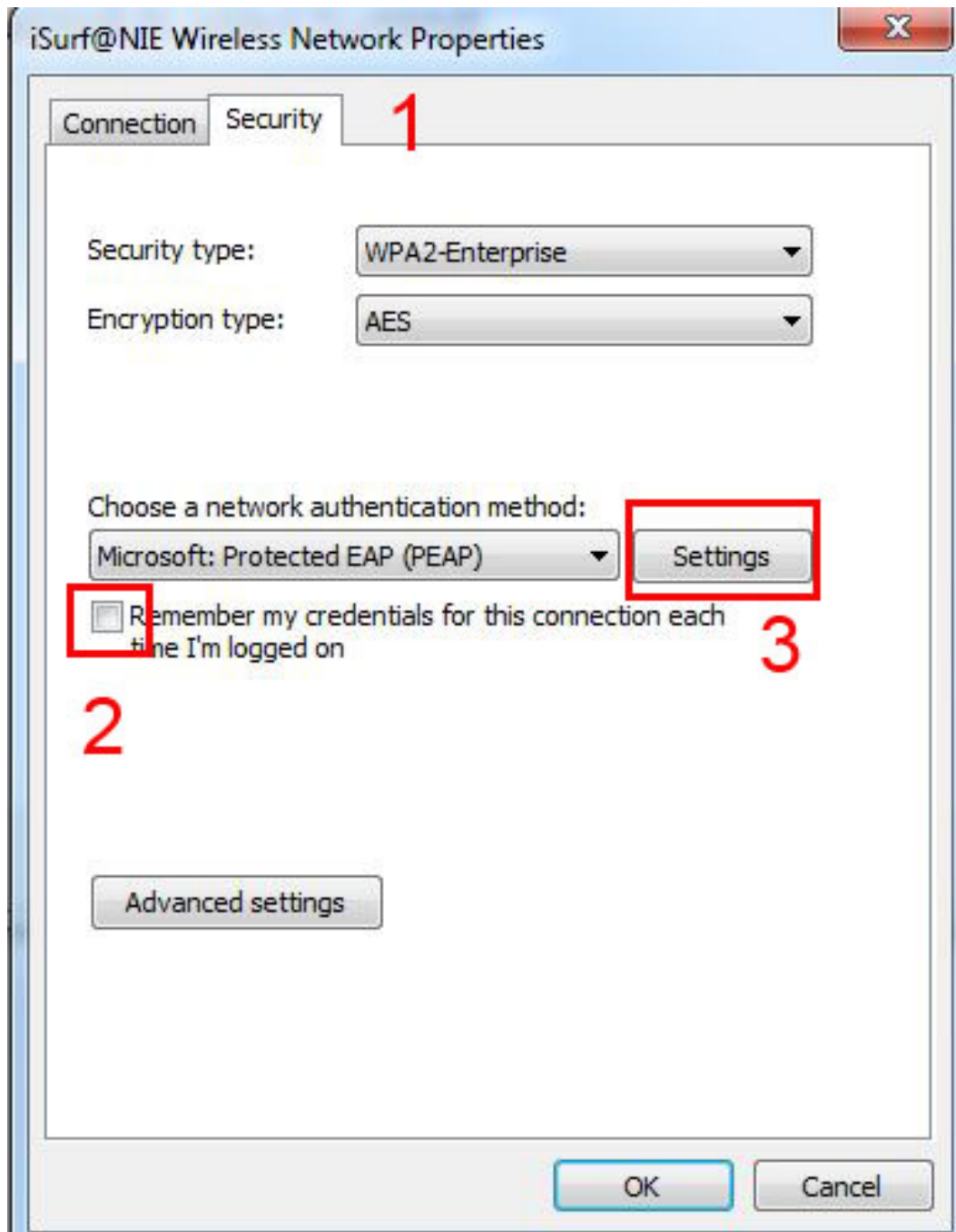
The screenshot shows a Windows Network Setup wizard window titled "Manually connect to a wireless network". The window contains the following fields and options:

- Network name:
- Security type:
- Encryption type:
- Security Key: Hide characters
- Start this connection automatically
- Connect even if the network is not broadcasting
- Warning: If you select this option, your computer's privacy might be at risk.

At the bottom right, there are two buttons: "Next" (highlighted in blue) and "Cancel".

4) Successfully added **eduroam** message pop-up. Click **Change connection settings**

- 5) Click **Security** tap,
Uncheck **Remember my credentials for this connection each time I'm logged on** box .
Click **Settings** button

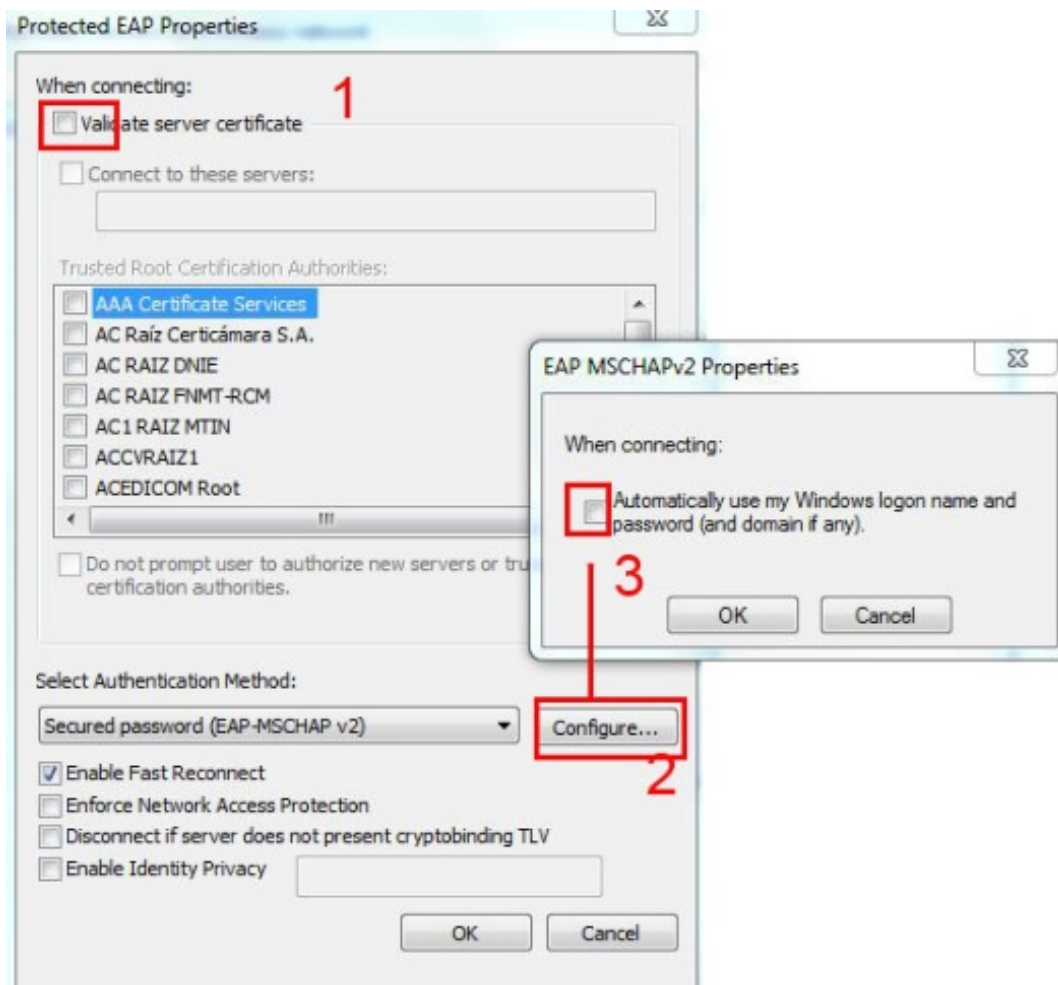


6) Uncheck **validate server certificate** and check the settings as below

Click **Configure** button

Uncheck **Automatically use my Windows logon name and password (and domain if any)**

Click **OK** buttons accept all the settings.



7) Your system is successfully configured **eduroam** wireless network. Connect to "**eduroam**" Wi-Fi network and enter your **credentials** for Wi-Fi connection.

8) To login, look for your wireless detection of various SSIDs shown up in your system and select **eduroam** and click **Connect** button.

For login credential, input the full path under username and your password and click **OK** button :-

NIE staff : username@niestaffstaff.cluster.nie.edu.sg

NIE student : username@niestudent.cluster.nie.edu.sg

Note that the username is your **AD** or **NIE Portal's** username and not your email address.

NTU staff : username@staff.main.ntu.edu.sg

NTU student : username@student.main.ntu.edu.sg

NTU alumni : username@assoc.main.ntu.edu.sg

Visitor / Guest : DomainUserName@Domain

