

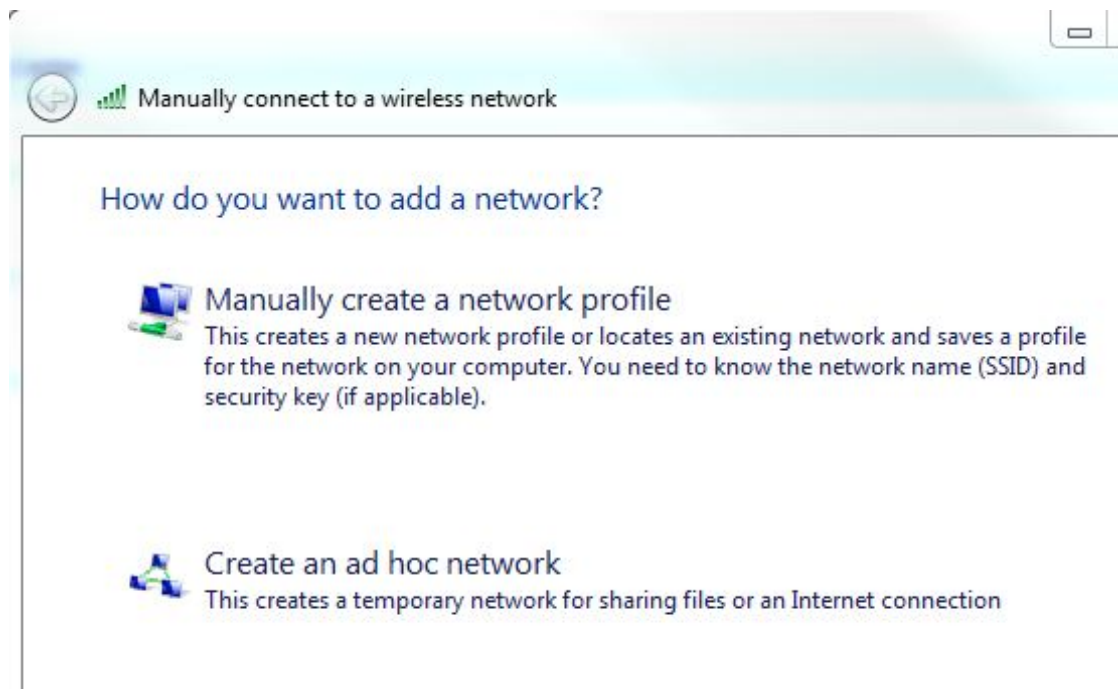
# iSurf@NIE for Windows 7

iSurf@NIE settings for Windows 7.

## Pre-requisites

- Turn on wireless card device

- 1) Go to **Control Panel > Network and Sharing Center > Manage Wireless network** and click **Add** button
- 2) Click **Manually create a network profile**



3) Supply the information as below and then click **Next** button:-

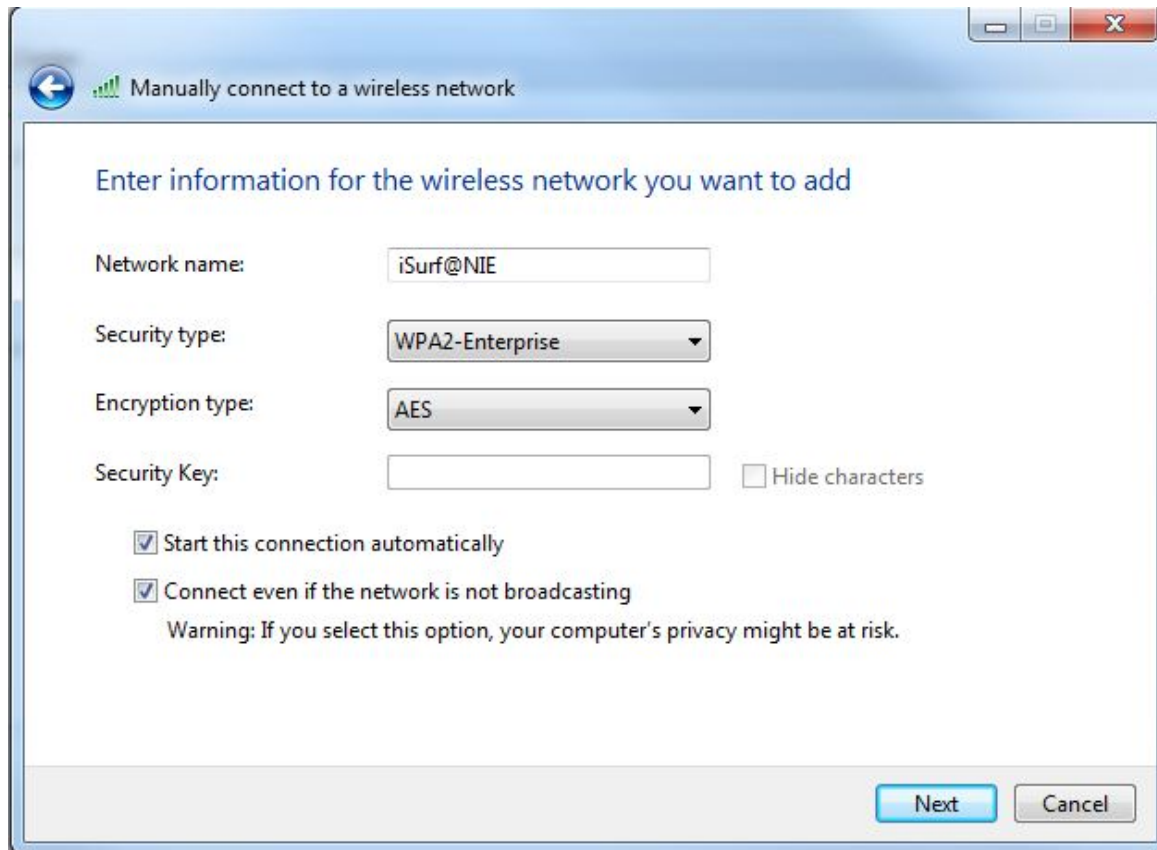
Network name: **iSurf@NIE** (case-sensitive)

Security type: **WPA2-Enterprise**

Encryption type: **AES**

Start this connection automatically: **Check**

Connect even if the network is not broadcasting : **Check**



Manually connect to a wireless network

Enter information for the wireless network you want to add

Network name:

Security type:

Encryption type:

Security Key:   Hide characters

Start this connection automatically

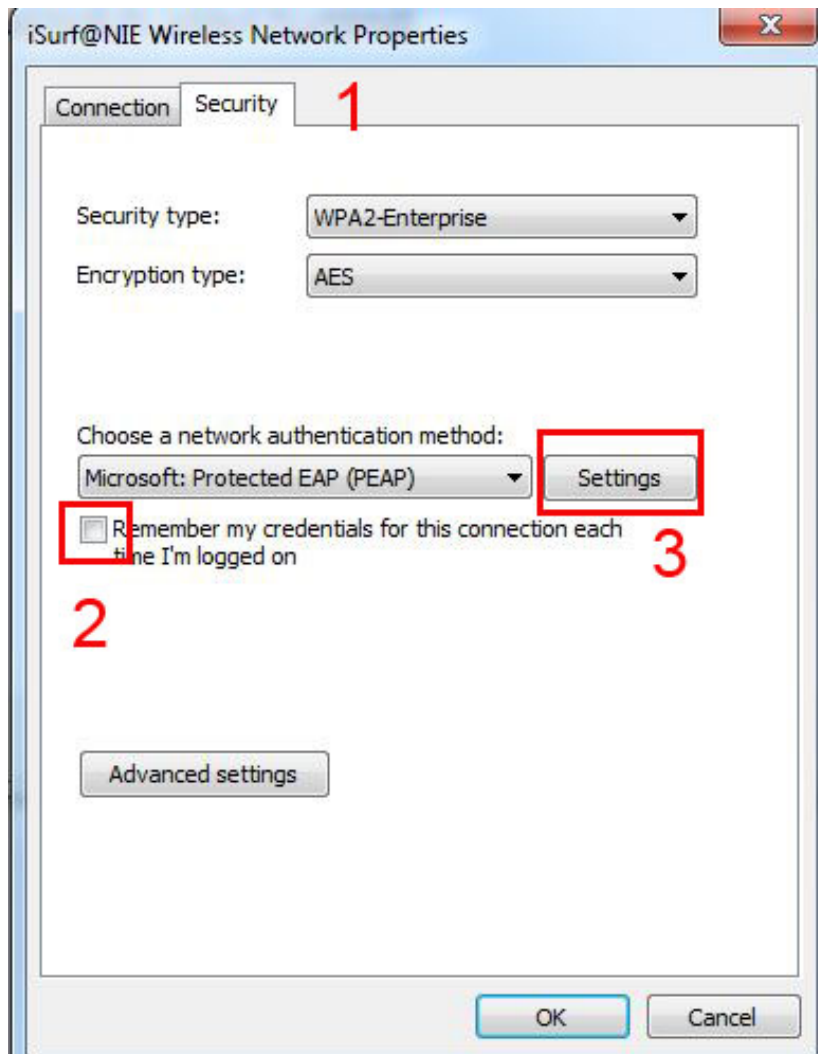
Connect even if the network is not broadcasting

Warning: If you select this option, your computer's privacy might be at risk.

4) Successfully added iSurf@NIE message pop-up. Click **Change connection settings**

5) Click **Security** tap, Uncheck **Remember my credentials for this connection each time I'm logged on** box.

Click **Settings** button

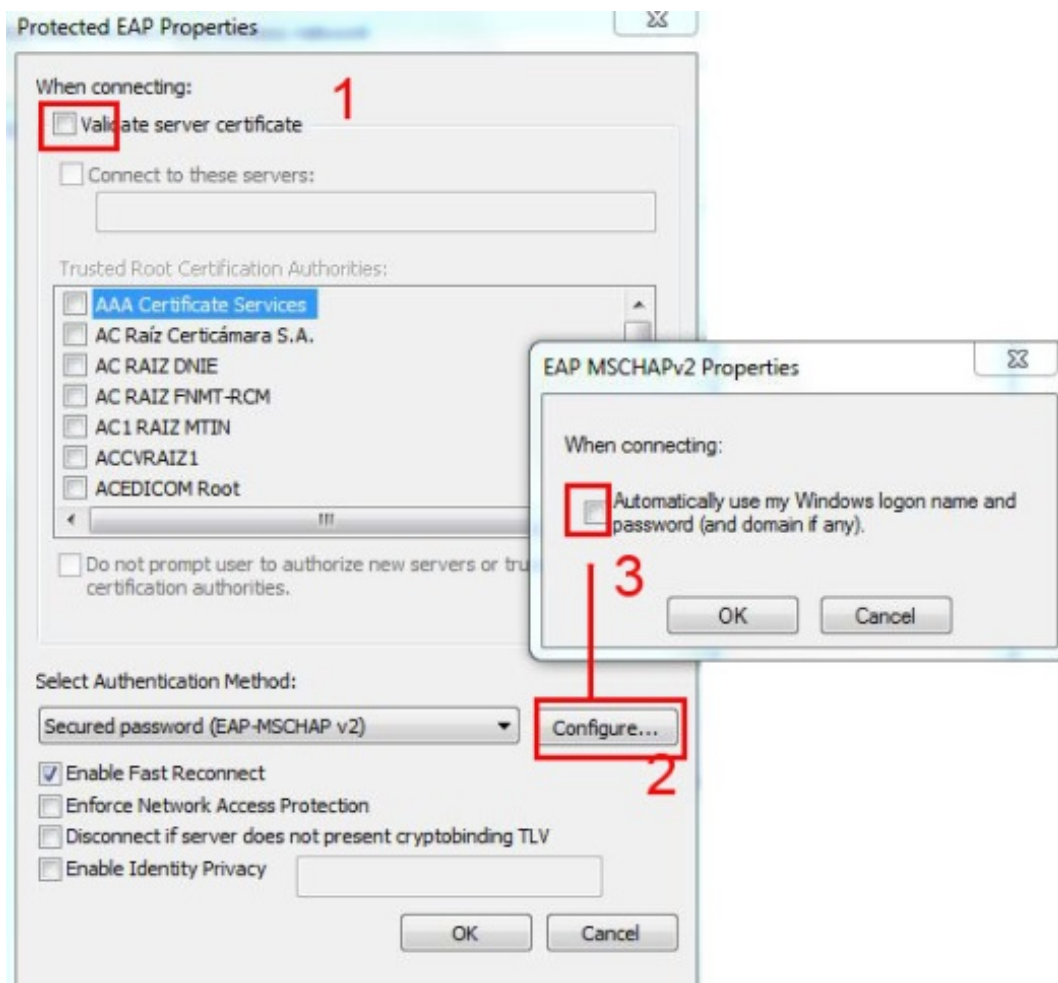


6) Uncheck **validate server certificate** and check the settings as below

Click **Configure** button

Uncheck **Automatically use my Windows logon name and password (and domain if any)**

Click **OK** buttons accept all the settings.



7) Your system is successfully configured iSurf@NIE wireless access. Connect to "iSurf@NIE" Wi-Fi network and enter your **credentials** for Wi-Fi connection.

(Optional) For auto login, go back to step 5

Click on the tab **Security >Advanced Settings**

Select **802.1X Settings**

Check **Specify authentication mode**

Select **User authentication**

Click **Save credentials** button

Enter your login credentials

Click **OK** to save the credentials and accept all the settings

